

# MUIR

SINCE 1968



**NEW**

## Standard (DW) & **Free Fall** (DFF) Drum Winches

### DW/DFF 8, 10, 12 & 15

#### Muir Drum Winches... Anchoring made easy

- Muir's patented Auto Free Fall, Power Up & Power Down, or Manual Release Free Fall are all available to you on the 1 unit!
- Mechanical Auto & Manual Release Free Fall means no troublesome electronics need to be mounted on the Drum or in your chain locker.
- Drum Shaft on a serviceable bearing centre for smooth hassle free operation even under full load.
- Muir's designed HDPE & UV protected Heavy Duty Brake means no over-run of the Drum during Free Fall.
- All Muir Free Falling Drum Winches are supplied with Circuit Breaker, Reversing Solenoid Pack, Helm Control Switch and Fascia Panels, plus, Simple Tools & Hardware for an easy 30 second adjustment from Auto Free Fall; to Manual Free Fall and Power Up Power Down options!
- Installation Instructions and Service Manual provided, and backed by Muir's 3 year limited warranty!

- Anchoring made easy, fast, and reliable with a Muir Drum Winch.
- No electronic components to fail.
- Larger Drum capacity than other Free Falls on the market.
- Does not require any more space than the standard Drum Winch.

#### STANDARD FEATURES:

- Compact Anchoring system to suit boats with little or no anchor rode storage.
- Designed and made in Australia.
- Drum-316 stainless Steel.
- 3 year limited warranty.
- Includes Reversing Solenoid, 100 amp circuit breaker and Up / Down Rocker switch.
- Fitting Instructions Included with full electrical wiring diagram.
- Simple installation.
- "Tangle free" rope and chain operation.

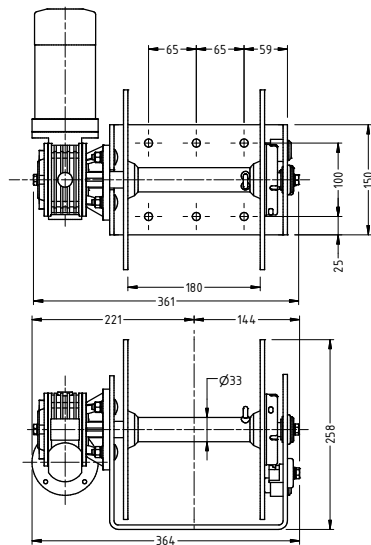
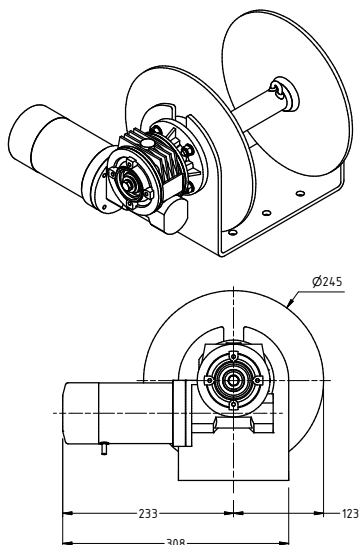
**NEW**

# DW/DFF 8, 10, 12 & 15

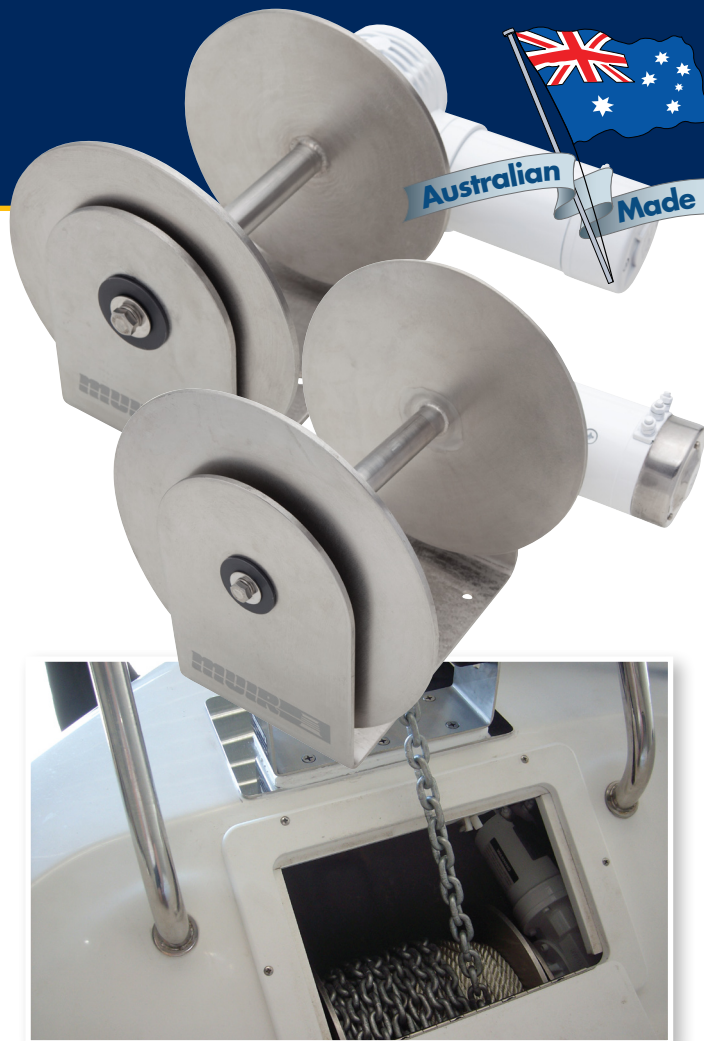
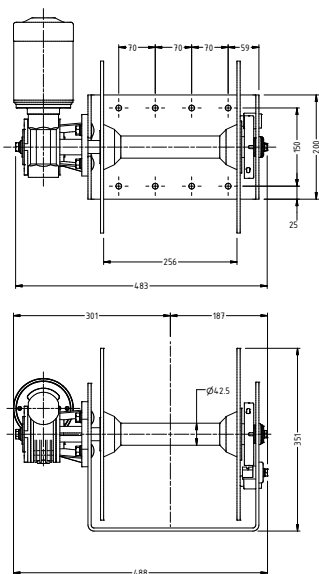
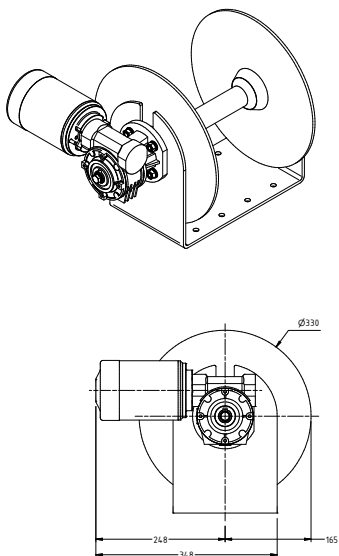


**Australian Made**

DW08/DFF08 FreeFall



DW10/DFF10 FreeFall, DW12/DFF12 FreeFall, DW15/DFF15 FreeFall



Muir products are sold, serviced and supported worldwide.

Head Office:

MUIR Windlasses Australia  
100 Browns Road, Kingston  
Tasmania 7050, Australia

Tel: +61 (0)3 6211 8811  
Fax: +61 (0)3 6229 7030  
Email: [info@muir.com.au](mailto:info@muir.com.au)

AUSTRALIA • NEW ZEALAND • EUROPE • UK • USA • AMERICAS  
ASIA • MIDDLE EAST • PACIFIC • SCANDINAVIA • AFRICA

## SPECIFICATIONS

PRODUCT	DW08 / DFF08	DW10 / DFF10	DW12 / DFF12	DW15 / DFF15
SUIT VESSEL LENGTH	5-8m / 16-26ft	8-10m / 26-34ft	10-12m / 34-40ft	12-14m / 40-47ft
POWER SUPPLY (DC)	12V	12V / 24V	12V / 24V	12V / 24V
MOTOR (Watts)	600	1000	1200	1500
MAX LOAD (kg)	180	260	312	390
WORKING LOAD (kg)	75	75	90	112
MAX LINE SPEED (m / min)	33	33	33	33
CHAIN SIZE	6mm	8mm	8mm	10mm
ROPE SIZE	8mm	10mm	10mm	12mm
NET WEIGHT (kg)	15 / 16	30 / 31	32 / 34	35 / 37

**MUIR**

SINCE 1968

[www.muir.com.au](http://www.muir.com.au)

©2010 Muir Engineering Pty. Ltd. Muir reserves the right to alter specifications without notice. All rights reserved. While all due care and attention has been taken in the preparation of this brochure no responsibility shall be taken for errors or omissions. THIS BROCHURE SHOULD NOT BE USED FOR INSTALLATION PURPOSES Any reference to MUIR or MUIR'S in this brochure implies MUIR ENGINEERING PTY. LTD.