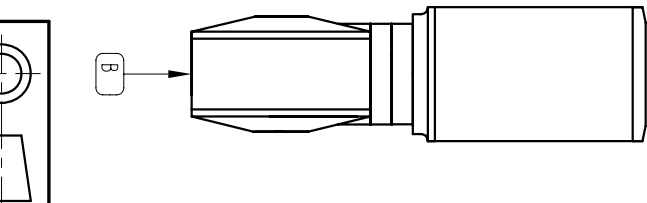
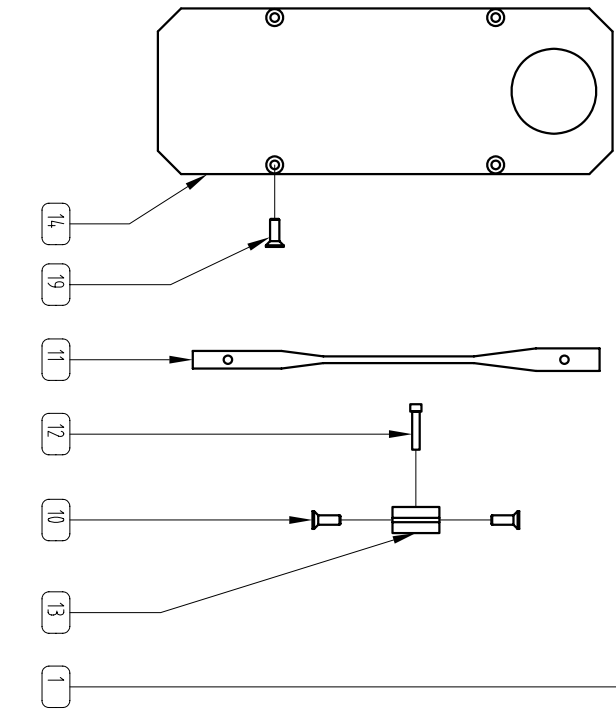
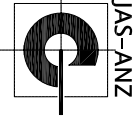




DNV Certification Pty Ltd  
Quality Assured ISO9001:2000



TOLERANCES (mm)	
X	±
X.X	±
X.XX	±
UNLESS OTHERWISE SPECIFIED	
MATERIAL	
FINISH	

**MUIR** WINDLASSES AUSTRALIA

TITLE  
HR600S COMPACT / SINGLE GYPSY  
EXPLODED VIEW (SILVER COLOUR)

PART No. K08-COMHR0600S

DRN WHE DATE 19/05/09 DRG No. K08-COMHR0600S  
SCALE NTS APP1 APP2  
SIZE A4

© COPYRIGHT MUIR ENGINEERING PTY. LTD. 3

ITEM	PART NUMBER	DESCRIPTION	QTY
1	P22-HSGHFF600S	HOUSING ALLOY "SILVER" HFF600S FREEFALL	1
2	K06-SFTH400600C	SHAFT ASSEMBLY H600 COMPACT	1
3	P24-S-TD3040600C	STUD SS304 H600C	4
4	S76-30407.94	WASHER SPRING SS304 5/16 INCH	4
5	S20-30407.94	NUT HEX SS304 0.5/16 INCH	4
6	R41-ORG02502201.8	O' RING SEAL 1 X 7/8 X 1/16" (BS020)	1
7	R42-SEA052022.207.9	SEAL 52 X 22 X 8 (TC12828)	1
8	S45-30406.35013	SCREW SHCS SS304 1/4 INCH X 0-1/2 INCH	1
9	P23-316031.8019.104	D' WASHER SS316 - 1 1/4" X 3/4" X 4MM	1
10	S34-30404.76025	SCREW CSK X/R MT 304 0.3/16 X 1 INCH	2
11	P19-S-TR3040600C	STRIPPER SS304 H600C	1
12	S45-30406.35025	SCREW SHCS SS304 1/4 INCH X 1 INCH	1
13	P05-PLRALL0600C	PEELER ALLOY H600C	1
14	P22-BPLALLH00600	BASE PLATE ALLOY H600 COMPACT	1
15	S45-30406.00025	SCREW SHCS SS304 6MM X 25MM	4
16	P15-PIN30415.88X41	PIN FINGER SS304 H600C	1
17	S36-SPR304FGR0600C	SPRING FINGER H600C	1
18	R40-FGRPVCO600A	FINGER PVC VR/CO600A	1
19	S33-30404.76013	SCREW CSK SL MT 304 0.3/16 X 0-1/2 INCH	4
20	S35-30406.35006	SCREW GRUB 304 0-1/4 X 0-1/4 INCH BSW	1
21	P21-304025.006.403	WASHER 304 25MM X 1/4" X 1/8"	1
22	R44-PLG25H600C	PLUG H600C	1
23	P07-CLN316VR00600A	CLUTCH NUT 316 VR600A	1
24	F90-HANNVLO600	HANDLE NYLON CLUTCH 500	1
25	S75-30408.0016	WASHER FLAT SS304 5/15" X 5/8"	4

A: GYPSY  
B: MOTOR / GEARBOX ASSEMBLY