

# OFFSHORE HATCH

## SELECTION INFORMATION



### INTRODUCTION

Hatches/Portlights **Introduction** Features Dimensions Fixtures

Built tough for performance and reliability, the Maxwell Offshore hatch series comes complete with silver anodised extruded aluminium frames. Heavy duty friction hinges hold the hatch open from 0° to 200° for maximum accessibility. A 15mm (19/32") deep internal flange allows for a quick, professional installation. The smoke-grey 10mm acrylic lid is UV stabilised for long life. All fastenings and screws are manufactured out of 316 stainless steel. Closing handles are fitted with a simple, effective security locking system on the inside to lock the hatch closed or in a ventilation position. White PVC trim mouldings and black fly screens can be ordered separately.

CE Maxwell Offshore Hatches are CE Approved for use in Area I



**3 YEAR**  
Limited Warranty

**MAXWELL**

# OFFSHORE HATCH

## SELECTION INFORMATION



## FEATURES

[Hatches/Portlights](#)[Introduction](#)[Features](#)[Dimensions](#)[Fixtures](#)

### Offshore Hinge

Heavy duty, adjustable friction hinges are fitted to all Offshore models. These hinges hold the hatch open in any position from 0 to 200 degrees for maximum accessibility and can be easily tightened or loosened to meet individual preference.

### Frames

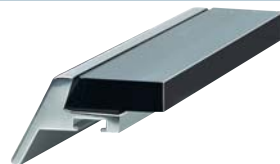
Extruded aluminium frames on all hatches feature a standard silver anodised finish and a deep 15mm (19/32") internal flange for a simple, professional installation.

### Unique Acrylic Fitting and Sealing System

Maxwell hatches incorporate a unique "V" system of fitting the acrylic into the frame ensuring that the window is secured into the frame with unparallel strength. The "V" system allows the full 10mm (3/8") thickness of the acrylic to be utilised for extra strength and the seal is further enhanced by a double sealant method guaranteeing a watertight hatch in the harshest conditions. The frame is designed to allow easy replacement of the acrylic by a qualified marine glazier should it become damaged.



## UNIQUE ACRYLIC SEALING SYSTEM



**3YEAR**  
Limited Warranty

**MAXWELL**

# OFFSHORE HATCH

## SELECTION INFORMATION



## DIMENSIONS

Hatches/Portlights

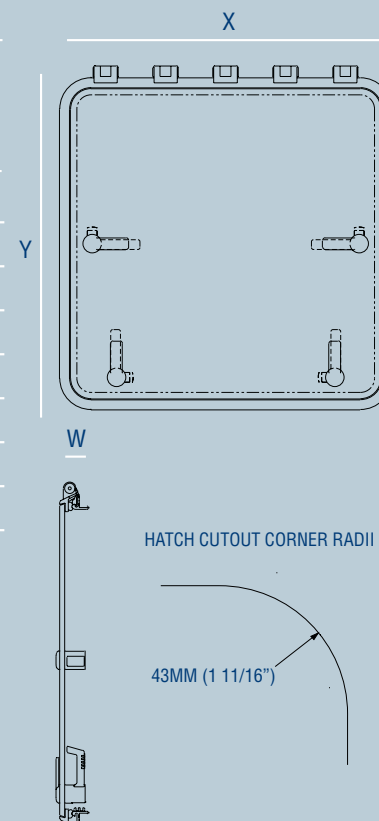
Introduction

Features

**Dimensions**

Fixtures

CODE	CUTOUT SIZE MM (X - Y)	CUTOUT SIZE IN" (X - Y)	CUTOUT RADIUS MM	CUTOUT RADIUS IN"	OUTSIDE SIZE MM (X - Y)	OUTSIDE SIZE IN" (X - Y)	HEIGHT ABOVE DECK MM (W)	HEIGHT ABOVE DECK IN" (W)	TRIMS TO SUIT	SCREENS TO SUIT
WHO00S	262 x 176	10 5/16 x 6 3/4	43	1 11/16	314 x 228	12 3/8 x 9	42	1 5/8	WT00W	WS00L
WHO10S	260 x 260	10 1/4 x 10 1/4	43	1 11/16	312 x 312	12 1/4 x 12 1/4	42	1 5/8	WT10W	WS10L
WHO20S	347 x 202	13 1/16 x 8	43	1 11/16	399 x 254	15 3/4 x 10	42	1 5/8	WT20W	WS20L
WHO30S	457 x 327	18 x 12 7/8	43	1 11/16	509 x 379	20 x 15	42	1 5/8	WT30W	WS30L
WHO41S	422 x 422	16 5/8 x 16 5/8	43	1 11/16	474 x 474	18 11/16 x 18 11/16	42	1 5/8	WT41W	WS41L
WHO45S	507 x 377	20 x 14 13/16	43	1 11/16	559 x 429	22 x 16 7/8	42	1 5/8	WT45W	WS45L
WHO50S	507 x 507	20 x 20	43	1 11/16	559 x 559	22 x 22	42	1 5/8	WT50W	WS50L
WHO62S	627 x 627	24 11/16 x 24 11/16	43	1 11/16	679 x 679	26 3/4 x 26 3/4	42	1 5/8	WT62W	WS62L



**3 YEAR**  
Limited Warranty



Do not cut opening before receiving your Hatch or Portlight.  
Hatches and Portlights should be fitted to a flat surface with a maximum tolerance of 1mm.

**MAXWELL**