

NORMALLY APPLIES TO THESE WINCHES AND MOTORS

MOTOR 12/24V	1000W	1200W	1500W
WINCH MODEL	COUGAR V 1000 V 1050 V 1250	CHEETAH V 1200 V 2200 V 2500	JAGUAR THOR V 3500

CHAIN METER
P/N: F80-CMAA500C
REFER TO MANUAL FOR
INSTALLATION GUIDELINES

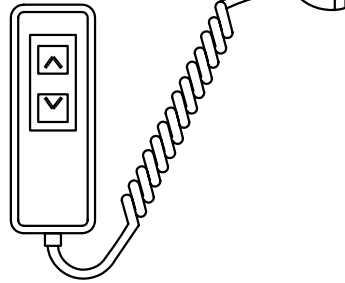


SENSOR MOUNTED UNDER
GYPSY (CHAIN WHEEL)
P/N: F80-CMSENSOR

YELLOW (DOWN)
ORANGE (UP)
BLACK NEG -

RED POS +

HAND PENDANT
P/N: F80-HP02



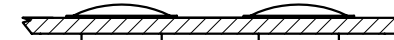
SOCKET



WARNING:
DO NOT ACTIVATE ANY UP & DOWN
SWITCH AT THE SAME TIME. REFER TO
MANUAL FOR MORE INFORMATION

DECK SWITCHES
P/N: F80-DS

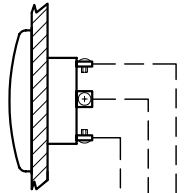
DOWN UP



TOGGLE SWITCH
P/N: R80-TS3P

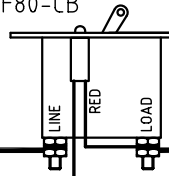
DOWN

UP

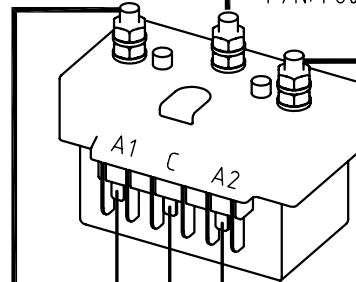


CIRCUIT BREAKER
P/N: F80-CB

3A CIRCUIT
BREAKER



CONTROL BOX
P/N: F80-RS

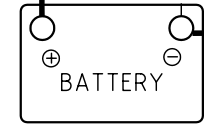


ISOLATING
SWITCH

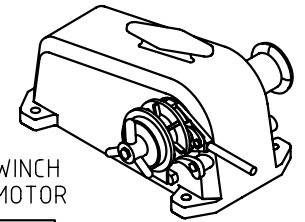


BLACK

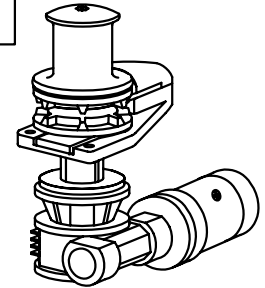
BATTERY



WINCH
MOTOR



F1
A2
F2



- REFER TO MANUAL FOR WIRING INDICATED BY HEAVY LINES
- LIGHTER LINES INDICATE LIGHT WIRING.
- - -** DASHED LINES INDICATE OPTIONAL WIRING.

TOLERANCES (mm)
X. ±
X.X ±
X.XX ±
UNLESS OTHERWISE SPECIFIED

MATERIAL

FINISH

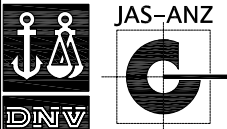
MUIR WINDLASSES AUSTRALIA

TITLE
**THREE TERMINAL MOTOR (REVERSING)
WIRING DIAGRAM (POSITIVE ACTING SOLENOID)**

PART No.

DRN JK	DATE 25/11/02	DRG No. WIRE1075
SCALE NTS	APP1	APP2
		SIZE A4

© COPYRIGHT MUIR ENGINEERING PTY. LTD.



DNV Certification Pty Ltd
Quality Assured ISO9001:2000