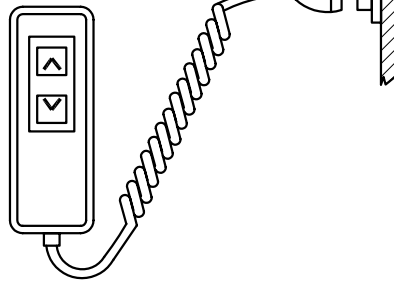


NORMALLY APPLIES TO THESE WINCHES AND MOTORS

MOTOR 24V	2000W
WINCH MODEL	VR/C 4000 HR4200 THOR

HAND PENDANT
P/N: F80-HP02

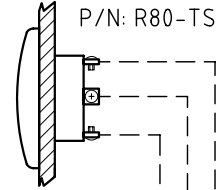


SOCKET



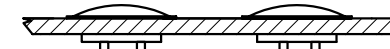
TOGGLE SWITCH
P/N: R80-TS3P

DOWN
UP



DECK SWITCHES
P/N: F80-DS

DOWN UP



CHAIN METER
P/N: F80-CMAA500C
REFER TO MANUAL FOR
INSTALLATION GUIDELINES

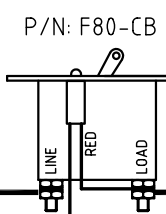


RED POS +

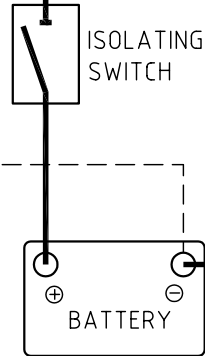
YELLOW (DOWN)
ORANGE (UP)
BLACK NEG -

SENSOR MOUNTED UNDER
GYPSY (CHAIN WHEEL)
P/N: F80-CMSENSOR

CIRCUIT BREAKER
P/N: F80-CB



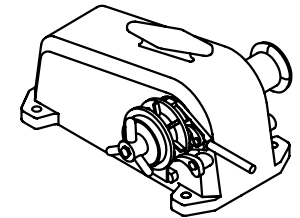
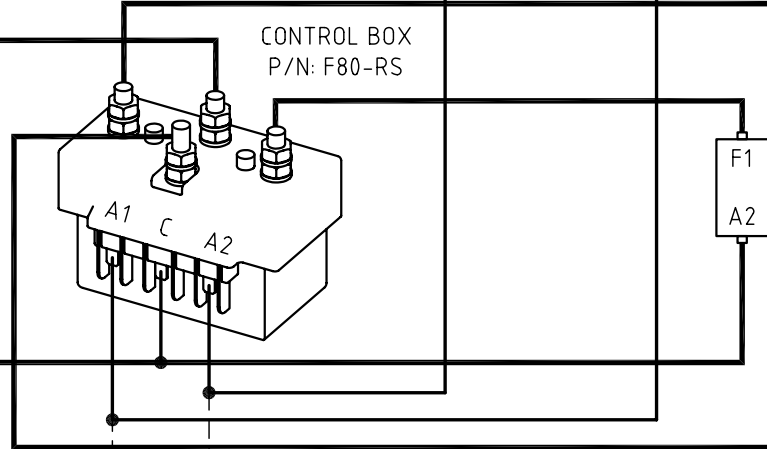
3A CIRCUIT
BREAKER



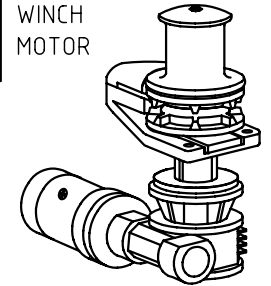
BATTERY

BLACK

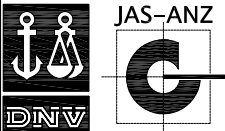
CONTROL BOX
P/N: F80-RS



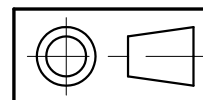
WINCH
MOTOR



- REFER TO MANUAL FOR WIRING INDICATED BY HEAVY LINES
- LIGHTER LINES INDICATE LIGHT WIRING.
- - -** DASHED LINES INDICATE OPTIONAL WIRING.



DNV Certification Pty Ltd
Quality Assured ISO9001:2000



TOLERANCES (mm)
X. ±
X.X ±
X.XX ±
UNLESS OTHERWISE SPECIFIED

MATERIAL

FINISH

MUIR WINDLASSES AUSTRALIA

TITLE
**FOUR TERMINAL MOTOR (REVERSING)
WIRING DIAGRAM (POSITIVE ACTING SOLENOID)**

PART No.

DRN JK	DATE 11/10/00	DRG No. WIRE1077
SCALE NTS	APP1	APP2
		SIZE A4

© COPYRIGHT MUIR ENGINEERING PTY. LTD.